

Disclosure Statement of Financial Interest

I, Brenda O'Brien DO NOT have a financial interest/arrangement or affiliation with one or more organizations that could be perceived as a real or apparent conflict of interest in the context of the subject of this presentation.



An Update from EU-OSHA: Current and Future Activities

Brenda O'Brien
Brussels Liaison Office Manager



Brussels, 15 May 2013



Mission

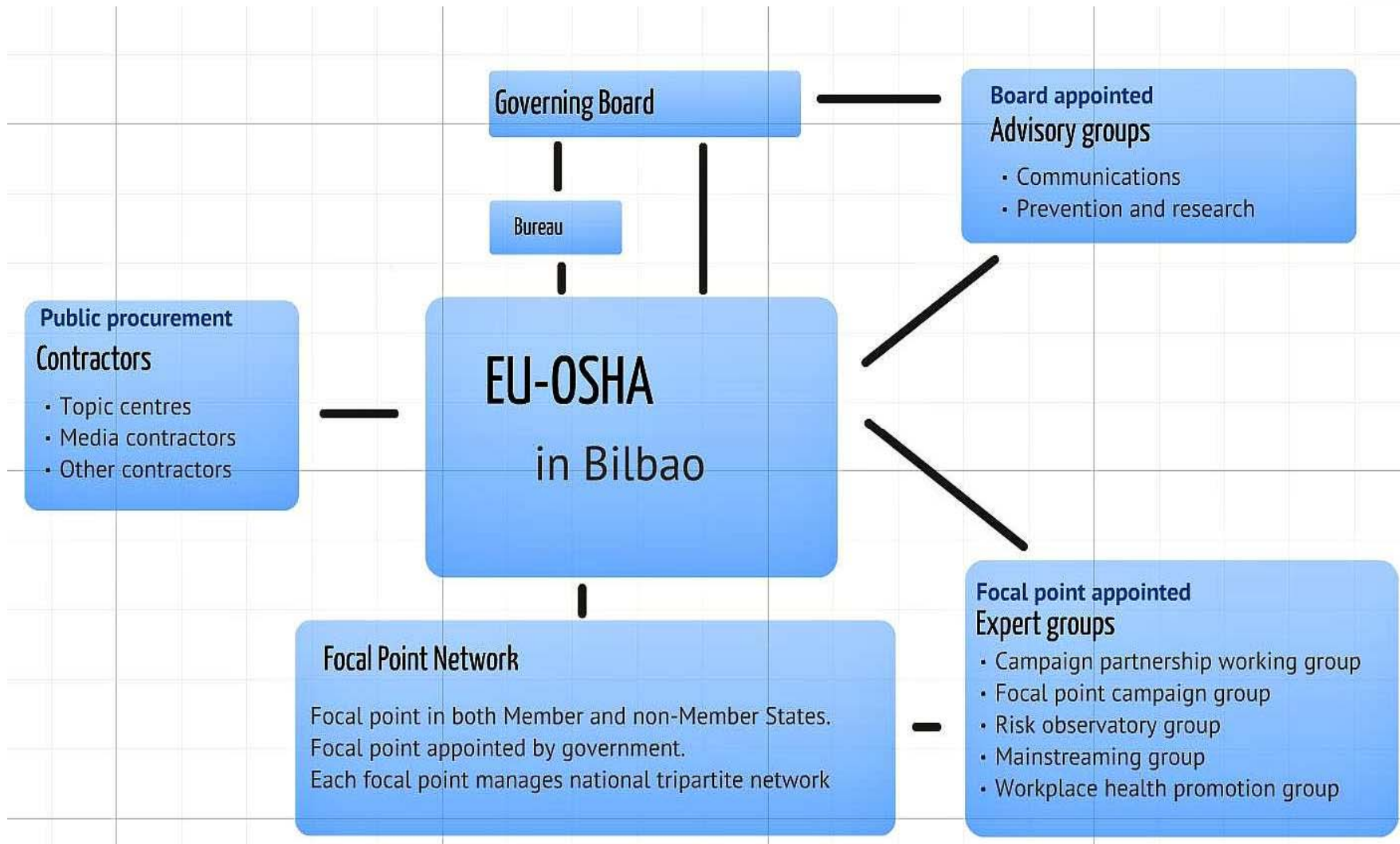
The European Union body responsible for the collection, analysis and dissemination of relevant information to serve the needs of those involved in safety and health at work.



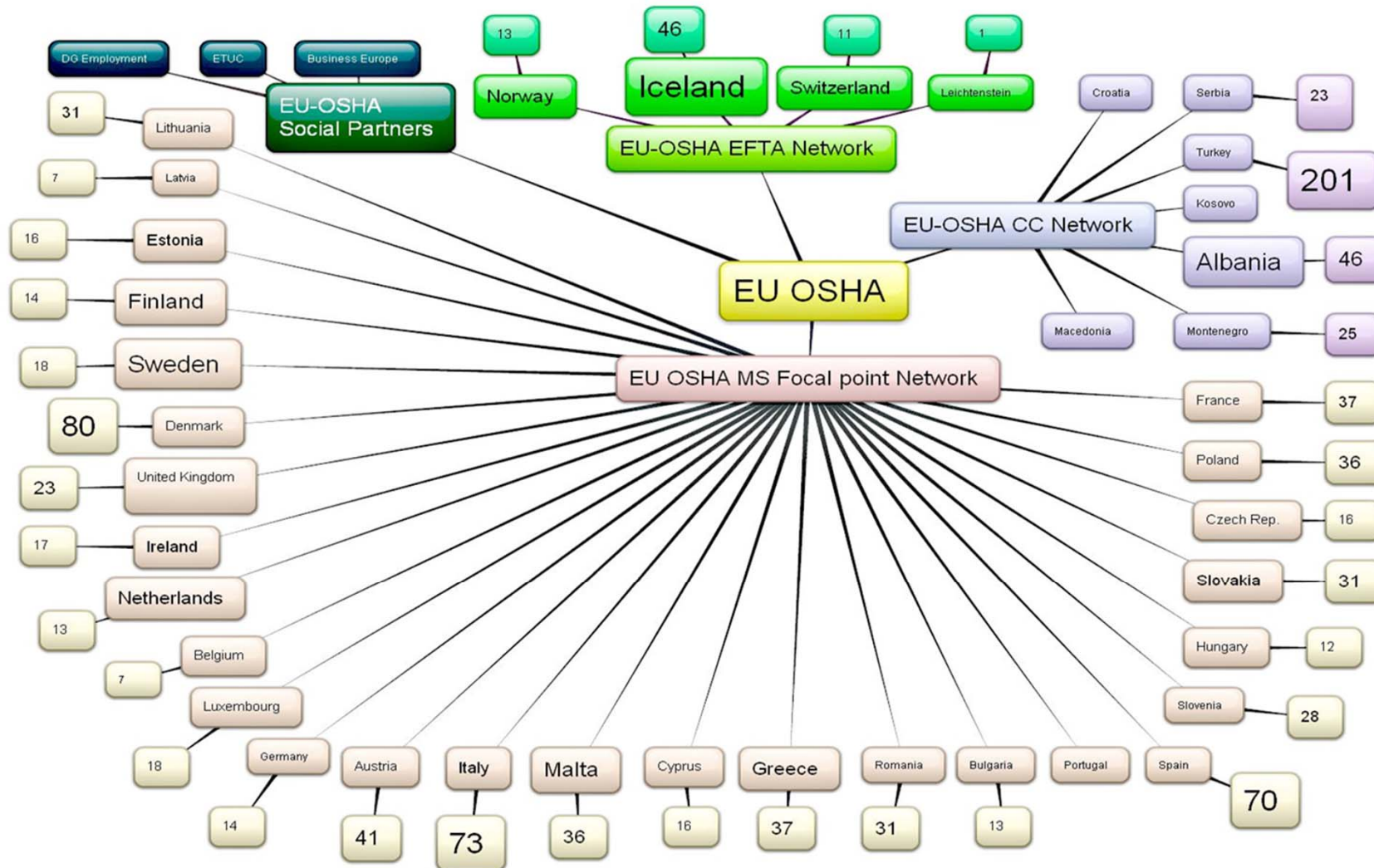
Tripartitism

- The basis of the European workplace approach
- Employer, worker, and government engaged in dialogue and seeking consensus
- EU-OSHA is a tripartite organisation
 - Tripartite governing board and bureau
 - Tripartite national focal point networks
- ESENER survey results show greatest OSH management performance when there is both leadership by management AND effective worker safety representation

How we are organised



How we engage at national level

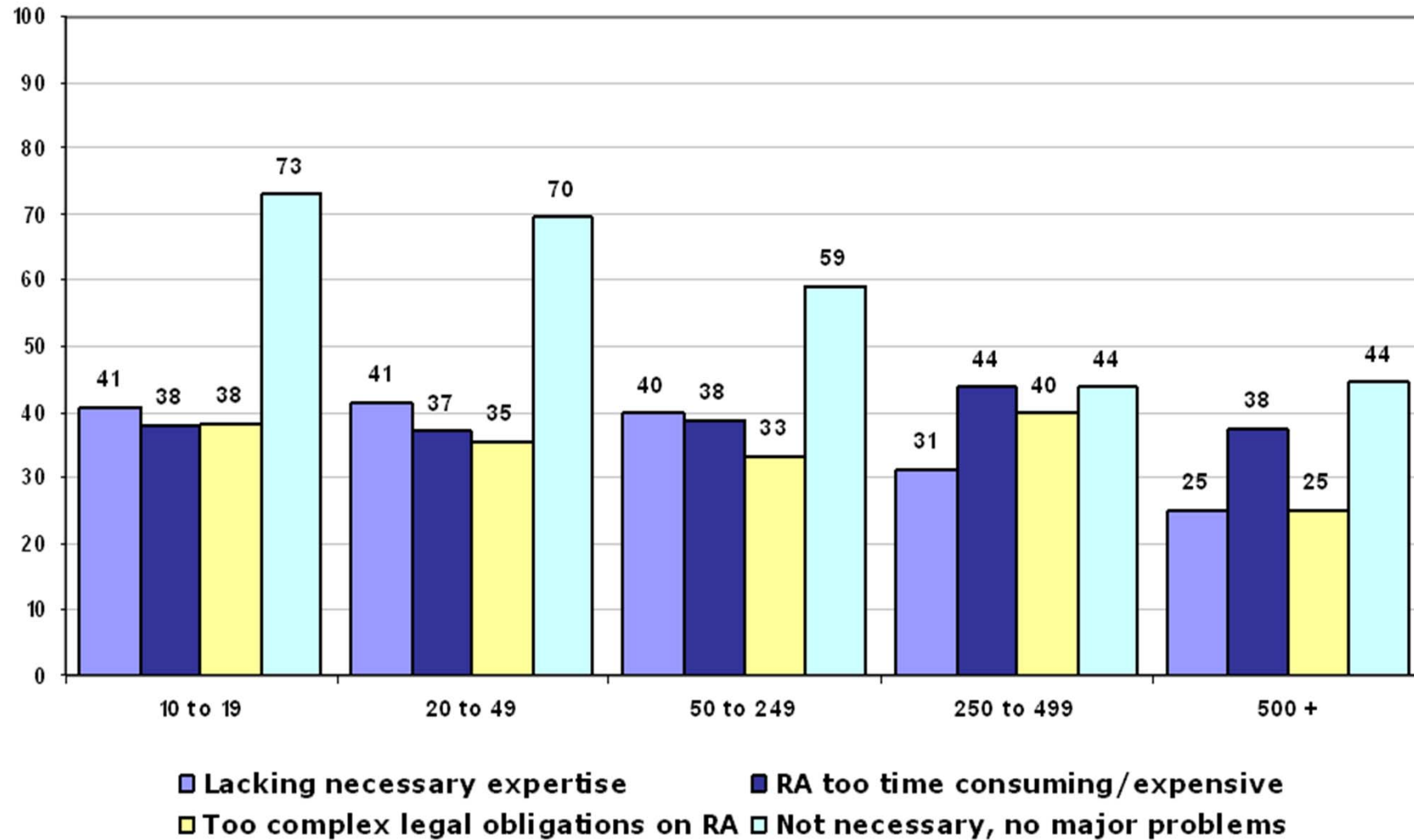


The cost of inadequate prevention

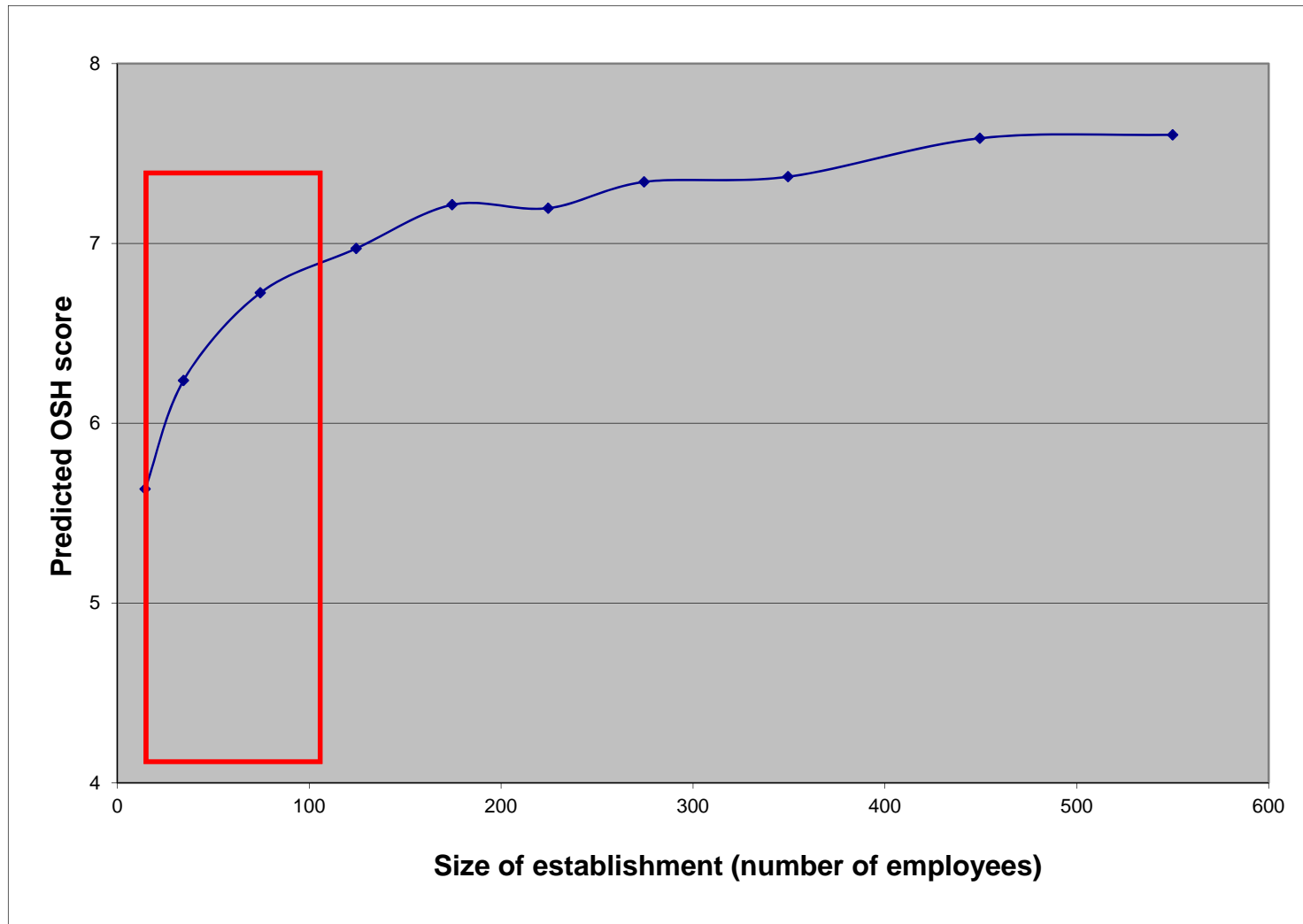
- 205 million people in employment
- 167,000 fatalities attributed to work-related accidents and diseases in EU, and within that:
 - 159,000 fatalities attributed to work-related diseases
 - Of which 74,000 fatalities attributed to hazardous substances at work (asbestos included)
- 95,581 work-related cancer deaths annually (2002)
 - 9.6% of all cancer deaths estimated to be attributable to work

Source: ILO, 2010

Lack of awareness of OSH issues



Management challenges in MSEs



Campaigning



- **World's biggest OSH campaign**
- **2012-2013: Working together for risk prevention**
- **2014-2015: Healthy workplaces manage stress**



Campaign 2014-2015: Why psychosocial risks?

- **ESENER survey - 2009 : 79% of European managers are concerned about stress at work;**
- **Less than 30% of European organisations have procedures in place to deal with stress, workplace violence and harassment;**
- **The management of psychosocial risks varies significantly between EU countries and sectors;**
- **Experts indicate that a holistic approach to managing psychosocial risks is especially effective;**
- **To benefit from the outcomes of the current HWC 2012 - 2013 and build on the close cooperation between management and workers to reduce or even better abolish stress at work.**

Campaign 2014-2015: Objectives

- Raising awareness about the growing problem with stress and psychosocial risks
- Raising awareness about the positive effects of reducing stress and psychosocial risks, including the business case;
- Increasing the enterprises' awareness and practical knowledge related to recognising and preventing stress and psychosocial risks at work;
- Promoting the use and development of simple practical tools for reducing stress and psychosocial risks at work, in particular for micro and small enterprises

OiRA - Supporting micro-enterprises




- Online interactive risk assessment tool
- Take-up around Europe and across sectors
- Partnerships with public authorities, social partners, and OSH institutions

Anticipating future risks

- **Gather data and other information (e.g. expert judgement) from as many sources as possible**
 - No single data source will give a complete picture
- **Focus not only on occupational safety and health, but on the relevant socioeconomic context, too**
- **Examine past trends, describe the situation at present, and explore future developments**

NAPO: Non-verbal OSH information



Napo

[Contact us](#) [Links](#)

Napo's films

The Napo series of films are produced in computer graphics with safety issues. The main character, Napo, and language. Their stories have an educational value. They specific aspects of safety at work. Sometimes they provide a blend of education, cultural neutrality and humour set in identity. Napo is a likeable but careless character. The films are for everyone. Each scene is independent of the others.

Napo in Risky Business
Download this film as [AVI](#) or [WMV](#)

- [The Napo story](#)
- [Who is Napo?](#)
- [Napo's friends](#)
- [Napo's films](#)
- [Using Napo](#)
- [Coming soon](#)
- [Rights and permissions](#)
- [Napo's Gallery](#)

Introduction

Click the image to see the film...
Download this film as [AVI](#) or [WMV](#)

Assess the risk

Click the image to see the film...
Download this film as [AVI](#) or [WMV](#)

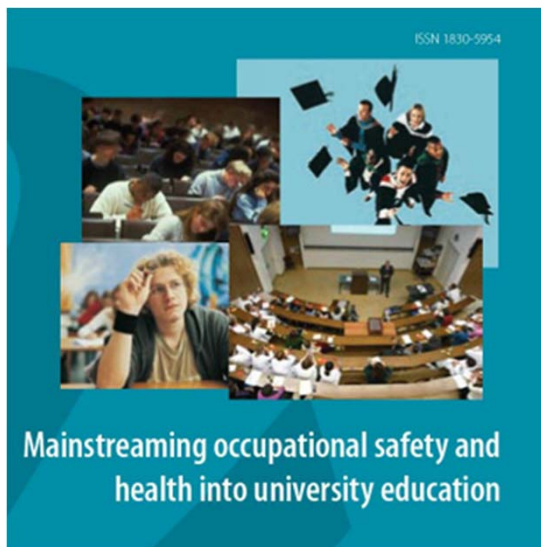
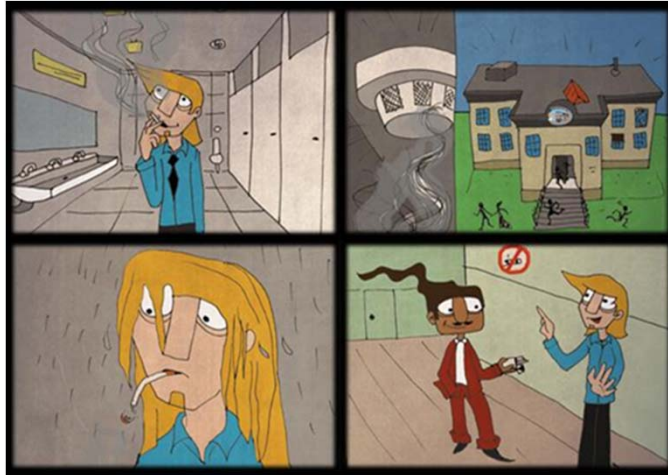
Identify the unknown

Click the image to see the film...
Download this film as [AVI](#) or [WMV](#)

Act on risks

Click the image to see the film...
Download this film as [AVI](#) or [WMV](#)

More approaches



- **Workplace health promotion and well-being at work**
 - Addressing worker health holistically
- **Mainstreaming health and safety into all levels of education**
 - So workers are better protected from their first day at work

Older workers pilot initiative (I)

- Initiated by the European Parliament
- Considering issue of older workers from an OSH perspective
- Supporting the application of existing legal requirements for the prevention of harm to workers
- Supporting good age management practice
- Recognising that a holistic approach is needed for workers of all ages

Older workers pilot initiative (II)

- Investigating the strategies and actions regarding rehabilitation, older workers and OSH that are in place at European and Member State level.
- Assist the development in areas such as return-to-work and rehabilitation for older workers, including individualised training, for example after an occupational musculoskeletal disorder.
- A selection of specific programmes will be described in detail. Assessment of programmes and practices will include discussion activities with intermediaries and relevant OSH experts.

Agency's activities: an example of work-related MSDs

- The most common work-related health problem (53% of all WRHP concern MSDs in EU-15, LFS 1999)
- Personal sufferings and high costs due to medical / social expenses, and lost productivity (estimated cost of back pain to NHS, business and economy in UK - £5 billion per year)
- Preventable if applying appropriate intervention methods
- An integrated management approach including both prevention and rehabilitation is the most promising*

MSDs on EU-OSHA Website

- Read the Key Facts
- Agency publications on Musculoskeletal Disorders

What can I do?

- How do I keep safe? Advice for employees
- What do I have to do? Advice for employers
- What do I need to know? Advice for safety and health professionals

https://osha.europa.eu/en/topics/msds/index_html

Facing up to the crisis

- **In the current economic crisis we have to do more with less**
- **Not addressing health and safety is not an option**
 - **The costs of inaction are too great for Europe, Member States, enterprises, and workers**
- **Only through on-going social dialogue and engagement – at both strategic and workplace level - can real change be made**

<https://osha.europa.eu>



AND FINALLY...

For any further questions, please get in touch with:

Brenda O'Brien

Manager
EU-OSHA Brussels Liaison Office

Tel.: +32 2 401 68 59
obrien@osha.europa.eu

Square de Meeus 38/40
B-1000 Brussels