

PAIN AS A QUALITY INDICATOR FOR HEALTHCARE

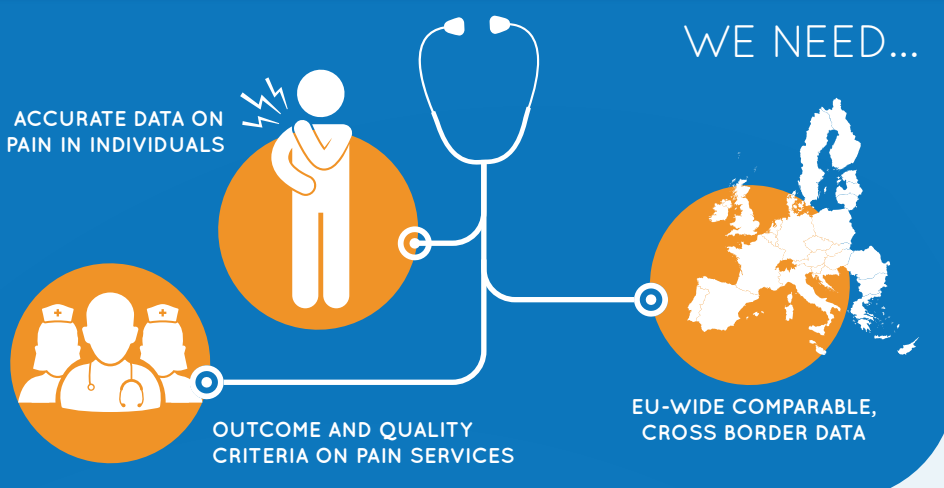
DID YOU KNOW?

Acute and chronic pain cause untold damage for millions of people worldwide and tears at the very economic and social fabric of our culture. Yet, to date there are no comprehensive pan-European figures outlining the impact of pain on society.ⁱ

Although several studies exist on pain levels in some EU member states, a quality benchmark like the European Core Health Indicators (ECHI) on pain is not available for consumers and patients.ⁱⁱ

The Cross-Border Healthcare Directive's Article 8(5) points out pain level as a key element to grant authorisation to receive healthcare abroad.ⁱⁱⁱ

MEASURING THE QUALITY OF HEALTHCARE SERVICES IN TERMS OF PAIN CARE IS FUNDAMENTAL TO OVERALL PATIENT CARE



Because pain is a central element of the patients' experience in many healthcare settings, the quality of pain care can be considered as an indicator of the general quality of a healthcare system.

Evaluating improvement in pain management in healthcare systems depends on measurement criteria of pain in individuals and of the prevalence of pain in societies. Therefore, cross border and cross institutional comparison of health care services in pain care require outcome criteria on patient-, consumer-, medical- and policy level.

SIP CALLS ON EUROPEAN GOVERNMENTS AND THE EU INSTITUTIONS TO



RAISE AWARENESS

of the importance of prevention, diagnosis and management of chronic pain amongst all healthcare professionals, notably through further education.



ESTABLISH AN EU PLATFORM

for the exchange, comparison and benchmarking of best practices between member states on pain management and its impact on society.



USE THE EU PLATFORM

to monitor trends in pain management, services, and outcomes and provide guidelines to harmonize effective levels of pain management to improve the quality of life of European Citizens.

i Ceri Phillips, Chris Main, Rhiannon Buck, Mansel Aylward, Gwennllian Wynne-Jones, Angela Farr. Prioritising pain in policy making: The need for a whole systems perspective, Health Policy 88 (2008) 166-175.

ii Directorate-General for Health and Food Safety, ECHI Data Tool, available here: http://ec.europa.eu/health/indicators/indicators/index_en.htm.

iii Directive 2011/24/EU of the European Parliament and of the Council of 9 March 2011 on the application of patients' rights in cross-border healthcare, available here: <http://eur-lex.europa.eu/legal-content/EN/TXT/HTML/?uri=CELEX:32011L0024&from=FR>.

The scientific framework of the "Societal Impact of Pain" (SIP) platform is under the responsibility of the European Pain Federation EFIC*. Cooperation partners for SIP 2016 are Pain Alliance Europe (PAE) and Active Citizenship Network (ACN). The pharmaceutical company Grünenthal GmbH is responsible for funding and non-financial support (e.g. logistical support). In the past the scientific aims of the SIP symposia have been endorsed by over 240 international and national pain advocacy groups, scientific organisations and authorities.