



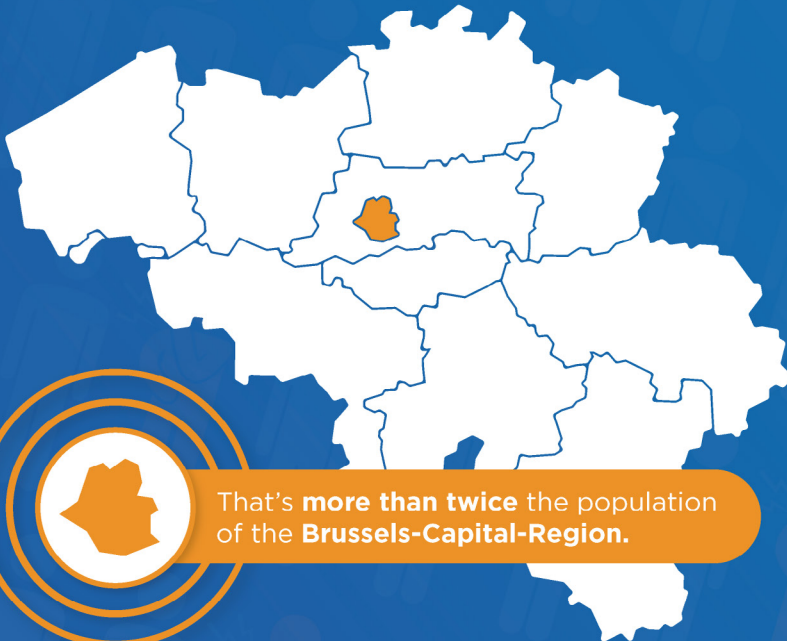
SOCIETAL IMPACT OF PAIN

FRAMING PAPER SUMMARY

It is the goal of the Societal Impact of Pain Belgium (SIP BE) group to achieve better care and pain management to improve the (re)integration of pain patients in the Belgian workforce and society by developing and presenting multi - stakeholder recommendations to policy makers.

More than 40% of Belgian families are confronted with consequences of chronic pain suffering

▶ Almost 1 in 4 Belgians suffer from chronic pain



That's **more than twice** the population of the **Brussels-Capital-Region**.

A multistakeholder start-up team was asked to help bridge the SIP EU and SIP BE projects. It is composed of the Belgian Pain Society (BPS), the Flemish Patient Platform, the National Federation of Independent Health Insurance Funds (MLOZ), the National Institute for Health and Disability Insurance (RIZIV), the European Pain Federation (EFIC) and Grünenthal.

Most of these organisations have historically been active endorsers of the SIP EU project that started to support pain stakeholders to create national SIP platforms to build on and foster further developments at national level.



Pain is the number one reason for workplace absenteeism and disability

What is **SIP EU** calling for?

The SIP Platform is calling on the European Commission, Member States and civil society to come together to reduce the societal impact of pain in the EU.

We have highlighted four areas:

Indicators

There is currently a data gap in how we measure and monitor the societal impact of pain across the EU.

The SIP Platform recommended and committed to implementing harmonised classification throughout Europe.

Research

Funding for pain research is inconsistent on EU and Member State levels.

Currently, there is also not enough total funding into pain research in Europe to adequately meet the needs of patients.

Early resource allocation, development of pain centres of excellence and pain as a topic for mission-oriented research are amongst the recommendations of the SIP Platform.



Education

Pain medicine is not taught as a dedicated subject in most European academic systems and widely known in the broader community.

The SIP Platform supports the sharing and coordinating of best practices, awareness raising activities and wider access to pain education.

Employment

Chronic pain is the number one reason for workplace absenteeism and disability in the EU.

Promoting policies that reflect the link between pain and employment and implementing best practices in work environments is one of the priorities of the SIP Platform.



What does SIP Belgium want to achieve

In line with the work done by the SIP (Europe) Platform, SIP BE wants to improve care and pain management in Belgium, with a special focus on employment (re)integration.

To achieve this, the SIP BE start-up team invites you to become part of a **multi-stakeholders' steering committee** including healthcare professionals, pain advocacy groups, healthcare insurance providers, representatives of health authorities, regulators and budget holders to address pain and offer policy recommendations to policymakers.

The multi-stakeholder steering committee's objective is to make the (re)integration of pain patients in the workforce as efficient as possible, and to make Belgium an example for the rest of the European countries.

The pain community needs you!

To achieve this objective and to offer Belgian policymakers actionable **policy recommendations**, we need to gather around the table key stakeholder organisations from the pain community.

As a member organisation of the steering committee, you will be invited to participate in policy workshops throughout 2020 that will result in concrete policy recommendations.

■ What can you do about it?

It will take everyone working together to solve a problem this big. To stay involved, become a member of the multi-stakeholder steering committee and endorse the SIP EU Joint Statement.

- Keep informed via www.sip-platform.eu and subscribe for the SIP Newsletter there





Endorsers

Steering committee

Private organisations

Governmental organisations

NGOs

Patient organisations

Professional organisations

The "Societal Impact of Pain" (SIP) is an international platform created as a joint initiative of the European Pain Federation EFIC and the pharmaceutical company Grünenthal GmbH. The scientific framework of the SIP BE platform is under the responsibility of the Belgian Pain Society. Co-operation partners for SIP BE are the Flemish Patient Platform, the Independent Mutualities and the National Institute for Health and Disability Insurance. The pharmaceutical company Grünenthal GmbH is responsible for funding and non-financial support.

Last update 26.07.2019